

WG<sup>co</sup>

WHITACRE GREER

# PERMEABLE CLAY BRICK PAVERS



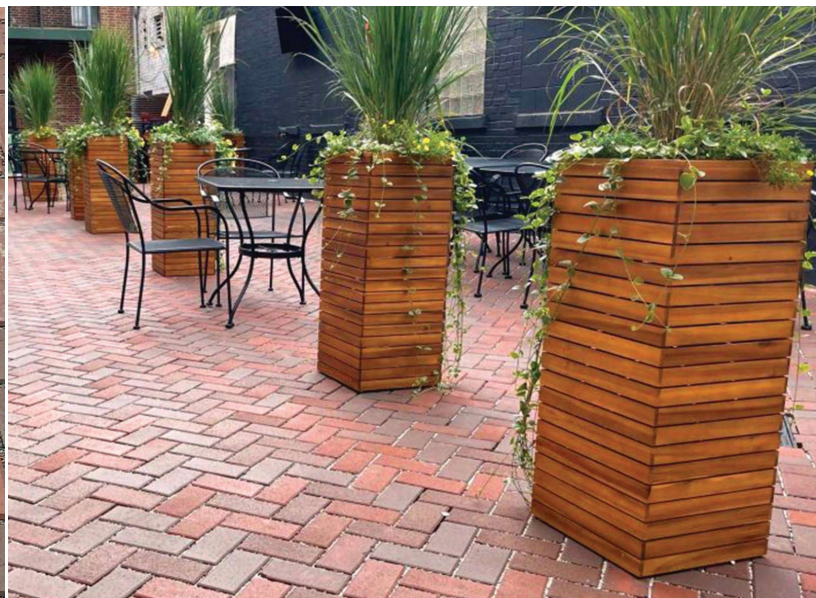
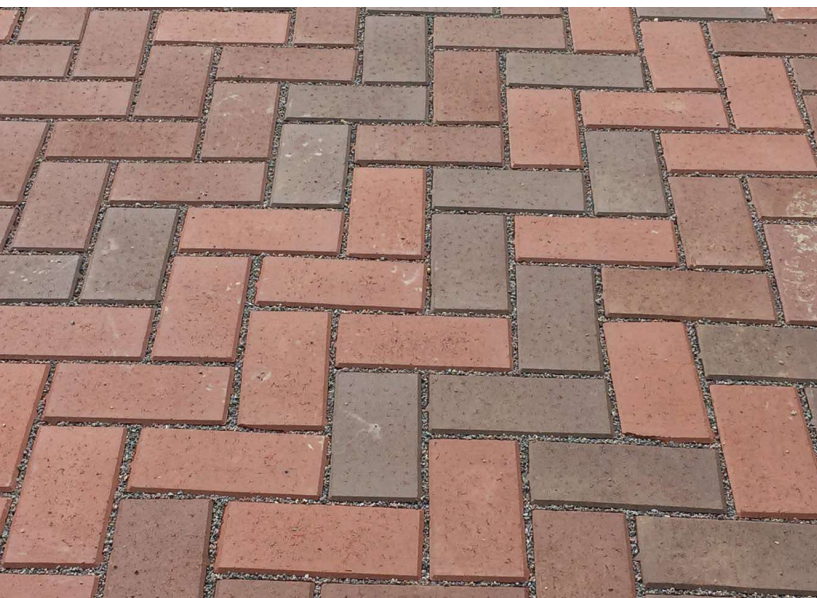
## Stormwater problems?

### Whitacre Greer has the solution.

Permeable clay brick pavements are an effective method of meeting stringent stormwater management requirements in communities while taking advantage of all the natural benefits of clay pavers.

Clay pavers bring texture, craftsmanship, a lifetime of color, durability, and strength to a permeable pavement. They are a rapidly growing solution to today's environmental requirements.

Founded over a hundred years ago, **Whitacre Greer manufactures clay pavers for residential, commercial, municipal, or institutional application.** Specializing in dry pressed clay pavers, their permeable clay pavers are a durable and beautiful solution to stormwater management and protecting water quality.



### Integrity and peace of mind.

Whitacre Greer vacuum dry-pressed pavers comply with all applicable industry standards. **Learn more about integrity and peace of mind from Whitacre Greer at [wgpaver.com](http://wgpaver.com)**

# COLORS & SIZES

## Adaptable & Versatile

Whitacre Greer offers their permeable pavers in three sizes to fit your traffic application and your aesthetic.

**Want more options?** We can create new color blends and brick patterns to match your taste and needs.

### SIZES

4" x 8" x 2 1/4"

4" x 8" x 2 3/4"

2 1/4" x 9" x 3"



C1272 Standard Permeable Paver



Boardwalk Permeable Paver



C902 Permeable Paver

# FEATURES OF PERMEABLE PAVEMENTS

The purpose of this construction is to provide permeability through the entire pavement section without compromising the structural capacity. Most of the principles and concepts for permeable segmental paving systems made with concrete paver units can be used in the design and construction of systems using clay pavers. The modulus of elasticity and compressive strength of the units are comparable. The system relies upon permeable aggregate in the joints, setting bed, base, and subbase courses, while maintaining paver interlock and base course stability. An engineer should be consulted for structural design and hydrology. *Illustration courtesy of The Brick Industry Association (gobrick.org).*

## Permeable System Benefits

- Recharges ground water
- Filters storm water
- Decreased water run off
- Meets LID for sustainable development
- Qualifies for LEED and ASLA sustainable sites credits

